

86  
Wilson Street  
Kingston

Last Revised: 2024-02-09  
Page 1 of 3

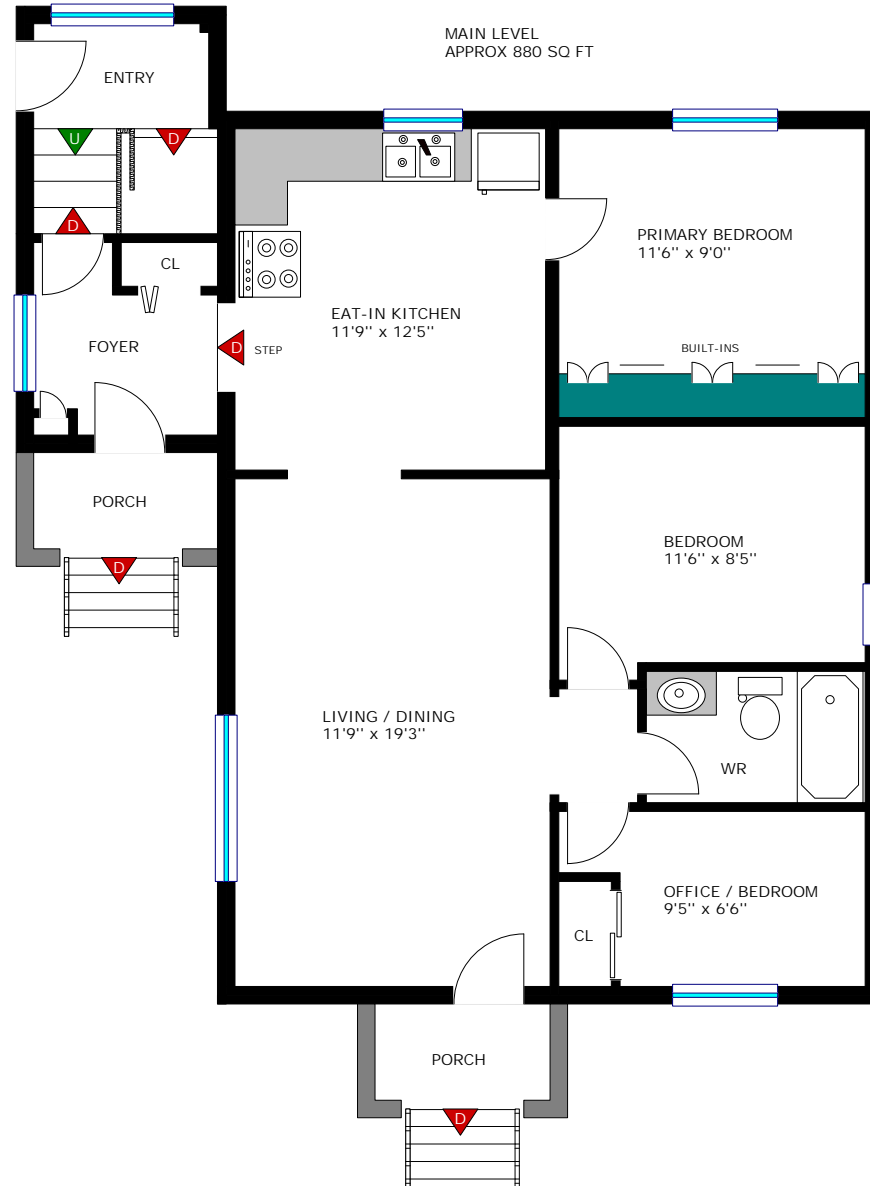
**Debra Currier**  
Broker



Floor plan measurements and square footage are approximate, and drawings are for illustrative purposes only. We make no guarantee or warranty as to the accuracy and completeness of the floor plan. Please be sure to conduct an independent investigation of the property to determine the suitability for your space requirements.



[www.realtyservices.ca](http://www.realtyservices.ca)



86  
Wilson Street  
Kingston

Last Revised: 2024-02-09  
Page 2 of 3

Debra Currier  
Broker



Floor plan measurements and square footage are approximate, and drawings are for illustrative purposes only. We make no guarantee or warranty as to the accuracy and completeness of the floor plan. Please be sure to conduct an independent investigation of the property to determine the suitability for your space requirements.



www.realty-services.ca



86  
Wilson Street  
Kingston

Last Revised: 2024-02-09  
Page 3 of 3

**Debra Currier**

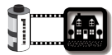
Broker



Floor plan measurements and square footage are approximate, and drawings are for illustrative purposes only. We make no guarantee or warranty as to the accuracy and completeness of the floor plan. Please be sure to conduct an independent investigation of the property to determine the suitability for your space requirements.

**Room Measurements**

LEVEL	ROOM / AREA	IMPERIAL	METRIC (Metres)
MAIN	Foyer	7'0" x 7'4"	2.13 x 2.24
	Living / Dining	11'9" x 19'3"	3.58 x 5.87
	Eat-In Kitchen	11'9" x 12'5"	3.58 x 3.78
	Primary Bedroom	11'6" x 9'0"	3.51 x 2.74
	Bedroom	11'6" x 8'5"	3.51 x 2.57
	Office / Bedroom	9'5" x 6'6"	2.87 x 1.98
	4-Pc Bath	7'0" x 4'11"	2.13 x 1.50
LOWER	Living / Dining	10'8" x 14'10"	3.25 x 4.52
	Eat-In Kitchen	10'10" x 11'1"	3.30 x 3.38
	Bedroom	10'10" x 8'6"	3.30 x 2.59
	Bedroom	10'10" x 8'7"	3.30 x 2.62
	+ Walk-In Closet	4'5" x 3'11"	1.35 x 1.19
	Bedroom	10'11" x 7'2"	3.33 x 2.18
	Laundry	6'10" x 5'0"	2.08 x 1.52
	Utility	7'4" x 3'8"	2.24 x 1.12
OTHER	Shed	8'0" x 12'0"	2.44 x 3.66
	Shed	10'0" x 6'0"	3.05 x 1.83
	Above Ground Pool (Round)	16'0" x 16'0"	4.88 x 4.88



[www.realtyservices.ca](http://www.realtyservices.ca)